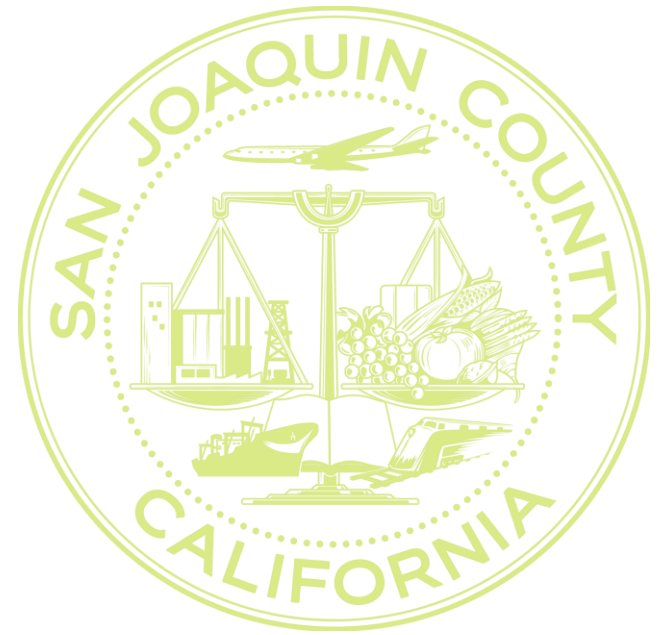




Greatness grows here.

Supervisory Redistricting Update

November 16, 2021



A Fair Maps Act, Community Driven Process

Bringing Transparency and Community Input to Redistricting

With the Fair Maps Act requiring Counties to include the public input in the redistricting process, we moved redistricting out into the public, with maps driven by Community of Interest Testimony.

- The Board furthered the FMA spirit by appointing a Redistricting Advisory Committee (RAC) to recommend plans for consideration
- Through the RAC's effort there has been an abundance of testimony, 37 DistrictR submissions, numerous hand drawn maps, and lots of public engagement
- The RAC's deliberative process has resulted in two plans being recommended to the Board by unanimous vote (10-0)

Supervisory Redistricting Meetings Conducted:

Redistricting Advisory Committee (RAC) Training

- 6/30 RAC Training #1
- 7/14 RAC Training #2
- 7/28 RAC Training #3

RAC Outreach Workshops for the Public

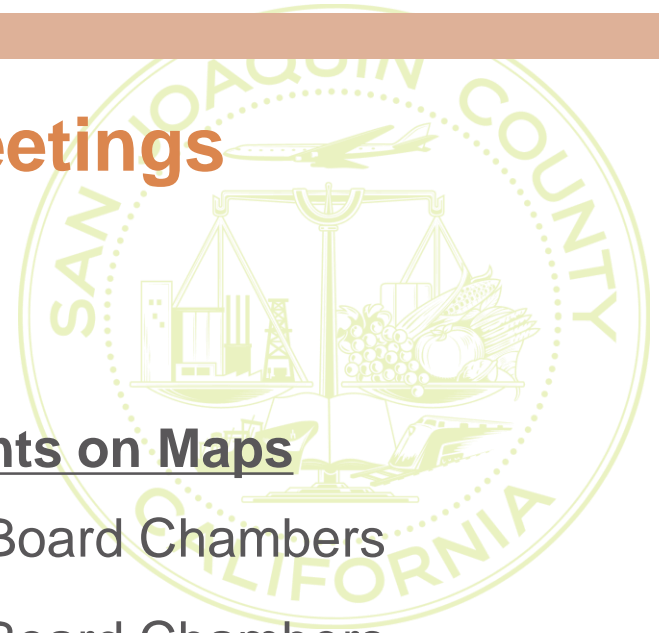
- 8/17 RAC Outreach Workshop #1 Admin Bldg. Board Chambers
- 9/15 RAC Outreach Workshop #2 Tracy City Hall
- 9/29 RAC Outreach Workshop #3 Lodi: Hutchins Street Square



Supervisory Redistricting Meetings Conducted (continued):

RAC Meetings to Receive Public Comments on Maps

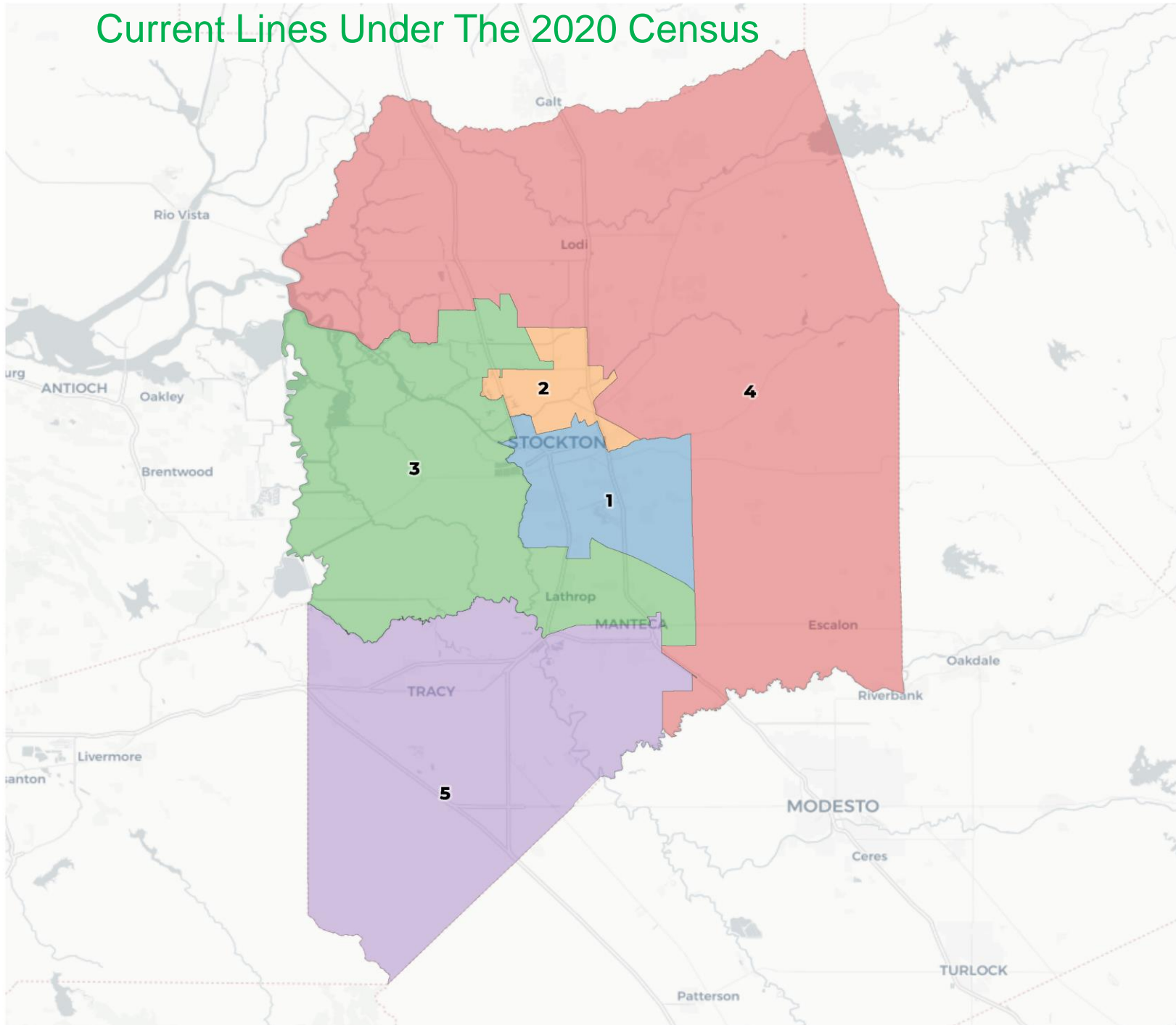
- **10/13 RAC Meeting #1** Admin Building, Board Chambers
- **10/27 RAC Meeting #2** Admin Building, Board Chambers
- **11/10 RAC Meeting #3** Admin Building, Board Chambers



Current Lines Under The 2020 Census

San Joaquin County

REDISTRICTING
PARTNERS



2020 Census

	1	2	3	4	5
Population	144,715	157,898	153,767	143,589	177,343
Deviation	-10,747	2,436	-1,695	-11,873	21,881
Deviation %	-6.9%	1.6%	-1.1%	-7.6%	14.1%
Other	23,222	40,675	54,068	80,911	62,237
Other %	16.0%	25.8%	35.2%	56.3%	35.1%
Latino	89,255	101,010	98,540	50,638	60,876
Latino %	61.5%	41.4%	37.8%	36.1%	34.3%
Asian	16,633	19,199	28,840	9,859	44,026
Asian %	11.5%	22.7%	18.8%	6.5%	24.8%
Black	15,559	12,914	13,700	2,450	10,204
Black %	10.9%	10.2%	8.3%	1.0%	5.8%

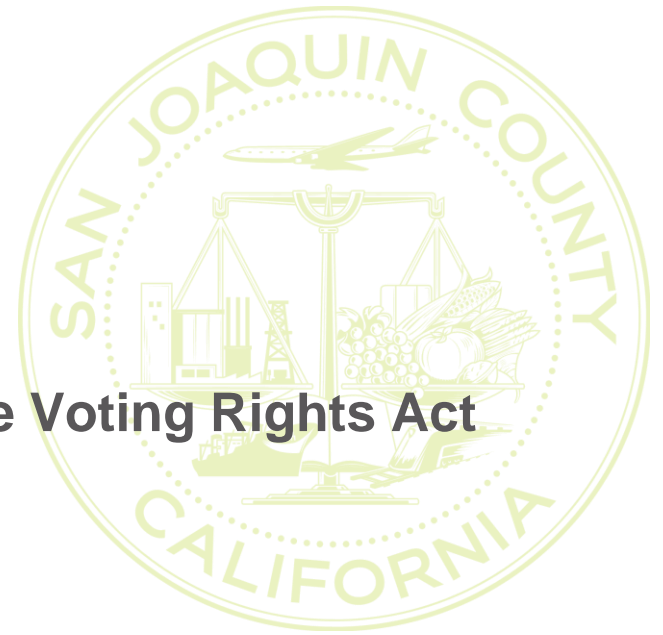
The total deviation of the plan is the sum of the absolute values of the highest and lowest districts. *Here the plan deviation is 21.7%*

Citizen Voting Age Population (CVAP)

	1	2	3	4	5
Total CVAP	70,491	93,717	99,453	90,796	94,542
Other CVAP	17,926	34,889	45,803	64,903	46,749
Other CVAP %	25.4%	37.2%	46.1%	71.5%	49.4%
Latino CVAP	33,619	28,451	28,963	19,833	27,821
Latino CVAP %	47.7%	30.4%	29.1%	21.8%	29.4%
Asian CVAP	8,099	20,397	15,734	4,974	14,299
Asian CVAP %	11.5%	21.8%	15.8%	5.5%	15.1%
Black CVAP	10,847	9,981	8,953	1,087	5,673
Black CVAP %	15.4%	10.7%	9.0%	1.2%	6.0%

RAC Work:

- **District 1 complies with Section 2 of the Voting Rights Act**
- **COI Themes**
- **Evolution of Maps**



Communities of Interest

Outreach Hearings & Public Testimony

After three outreach hearings, many DistrictR submitted maps, and multiple RAC Meetings, we've received public, Commissioner, and Supervisor input. The themes of testimony received:

- Unite Tracy with Mountain House
- Respect the rural/agricultural areas and their unique interests within the County
- Respect the Delta
- Stockton must be split because of its size –major thoroughfares and neighborhood lines
- Don't split Manteca into multiple districts
- Unify the Port in one District

Communities of Interest

Outreach Hearings & Public Testimony

After three outreach hearings, many DistrictR submitted maps, and multiple RAC Meetings, we've received public, Commissioner, and Supervisor input. The themes of testimony received:

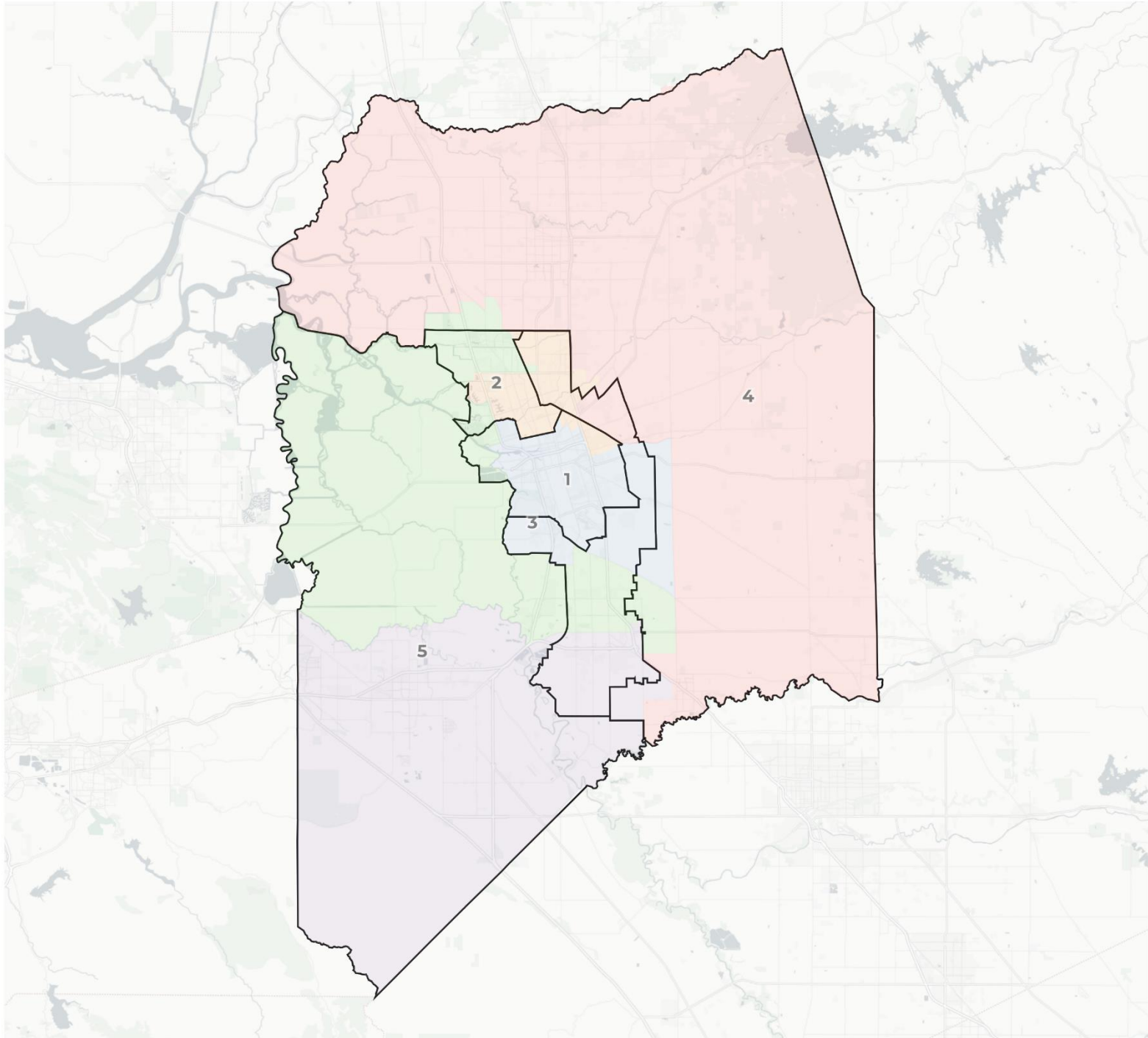
- Unite North Stockton into District 2 along Eight Mile Road
- Waterloo should be united with Morada and other rural communities
- Ensure District 5 has agricultural land south of Manteca
- Respect the Delta
- United Manteca with Lathrop in a district
- The RAC should send multiple maps to the Board for review

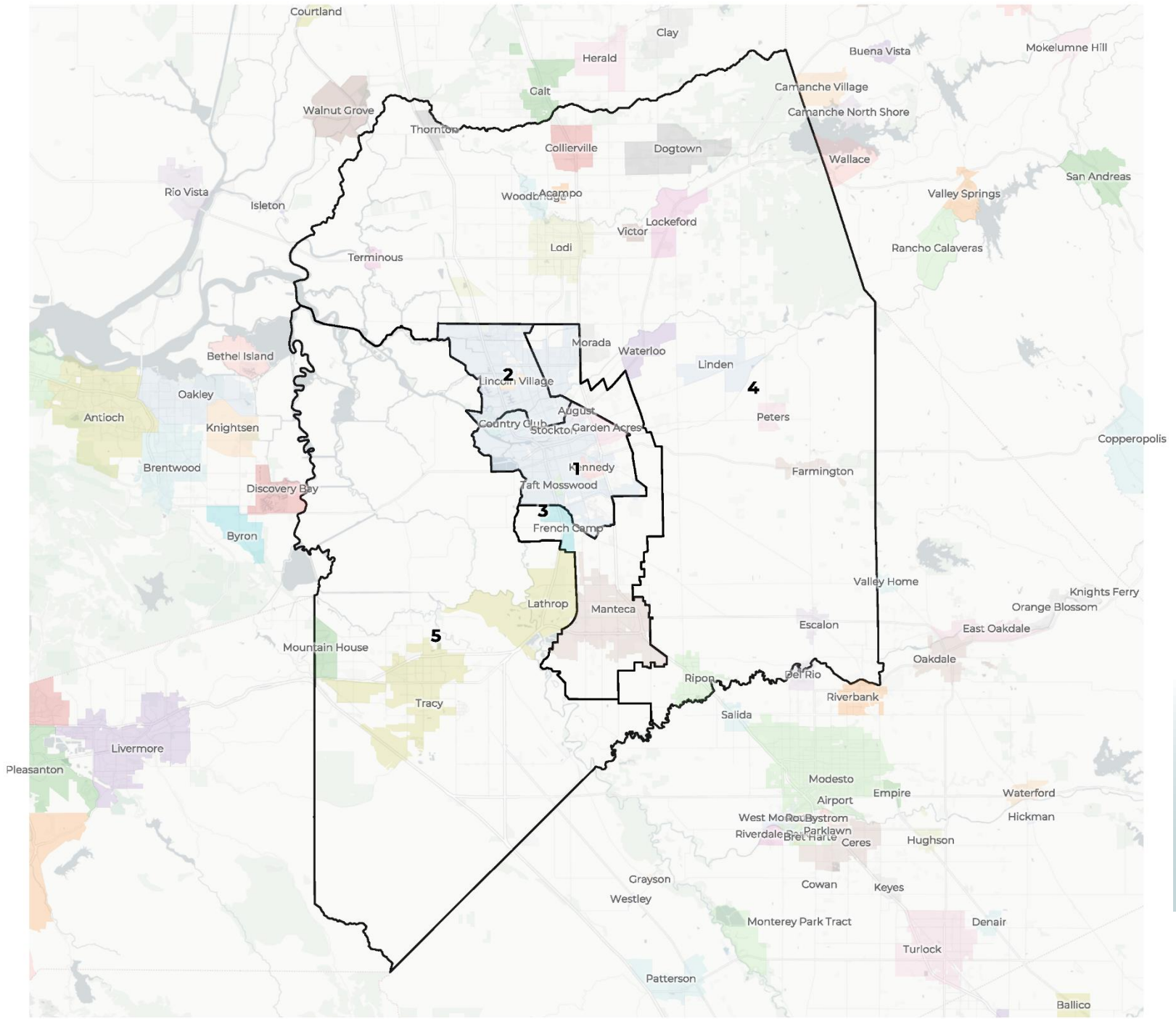
Redistricting Advisory Committee

Recommended Two Plans to the Board

After deliberating on Wednesday and discussing multiple plans, the RAC has recommended two plans by unanimous vote to the Board of Supervisors. These plans:

- Follow the required criteria of the Fair Maps Act and comply with the Federal Voting Rights Act
- Incorporate Community of Interest testimony received throughout the redistricting process





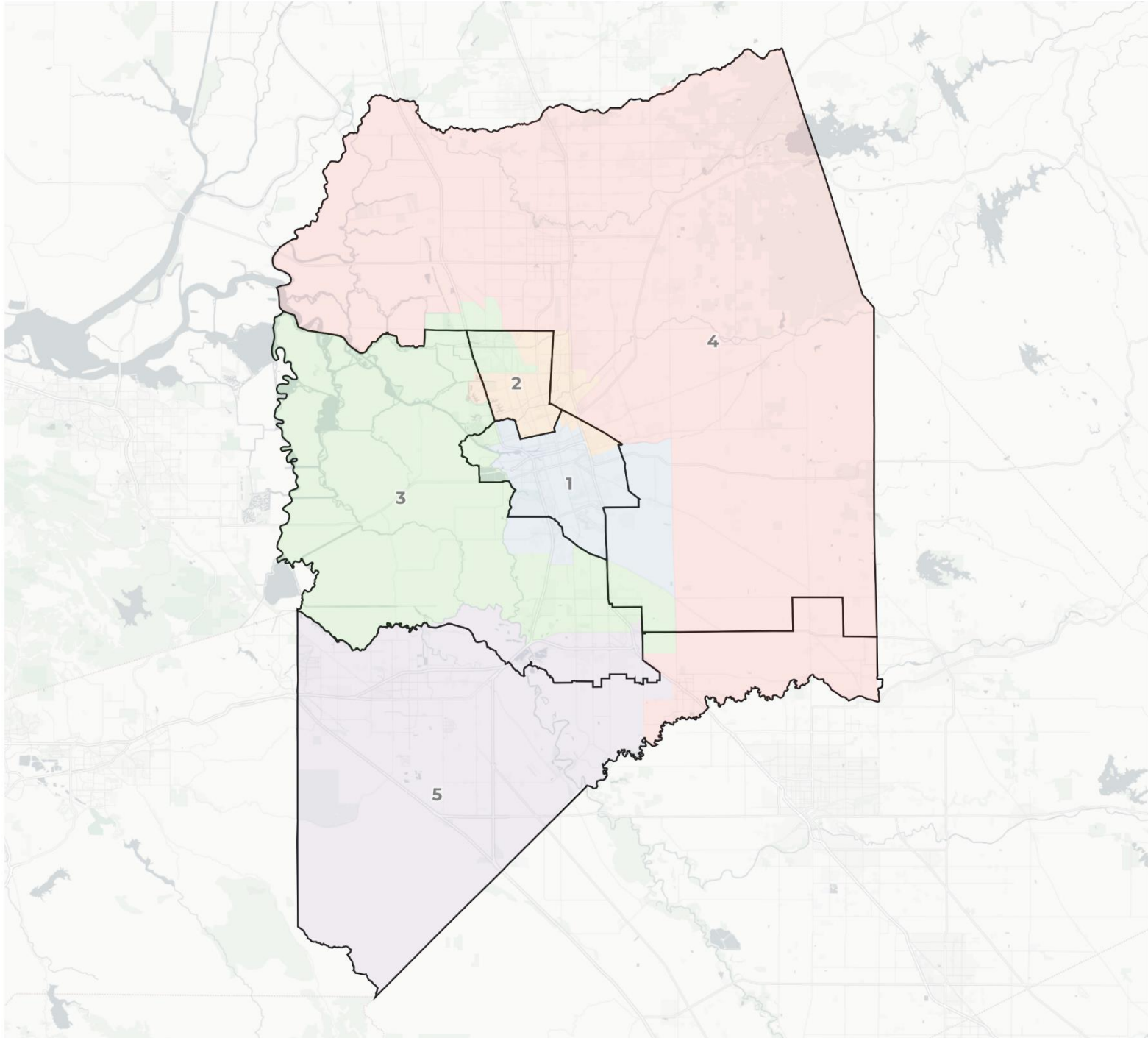
2020 Census

	1	2	3	4	5
Population	161,276	156,287	152,829	146,126	160,795
Deviation	5,813	824	-2,634	-9,337	5,332
Deviation %	3.7%	0.5%	-1.7%	-6.0%	3.4%
Other	27,127	52,042	47,837	82,175	51,930
Other %	16.8%	33.3%	31.3%	56.2%	32.3%
Latino	100,222	59,522	55,177	53,033	56,423
Latino %	62.7%	36.6%	37.6%	36.3%	35.1%
Asian	10,101	17,245	17,245	14,410	42,540
Asian %	10.6%	18.2%	24.4%	6.4%	26.5%
Black	15,997	15,997	10,330	1,298	9,902
Black %	9.9%	11.9%	6.8%	1.0%	6.2%

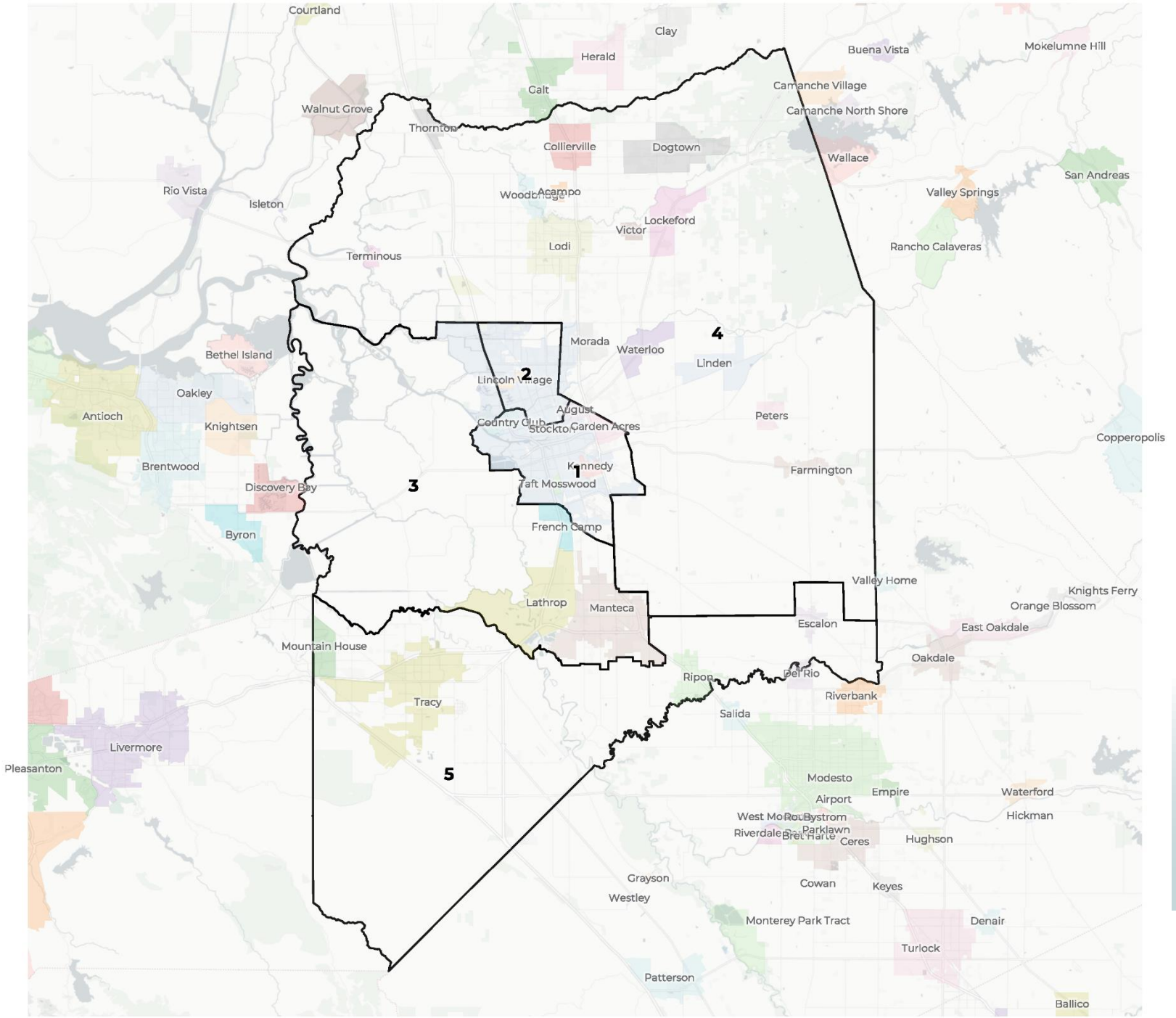
The total deviation of the plan is the sum of the absolute values of the highest and lowest districts. *Here the plan deviation is 9.7%*

Citizen Voting Age Population (CVAP)

	1	2	3	4	5
Total CVAP	76,961	100,512	93,530	92,877	85,117
Other CVAP	20,354	44,137	41,631	65,510	38,637
Other CVAP %	26.4%	43.9%	44.5%	70.5%	45.4%
Latino CVAP	37,627	26,862	27,554	20,699	25,944
Latino CVAP %	48.9%	26.7%	29.5%	22.3%	30.5%
Asian CVAP	8,307	17,834	17,192	5,390	14,780
Asian CVAP %	10.8%	17.7%	18.4%	5.8%	17.4%
Black CVAP	10,674	11,679	7,154	1,278	5,755
Black CVAP %	13.9%	11.6%	7.6%	1.4%	6.8%



San Joaquin County
Draft Plan B with Cities



2020 Census

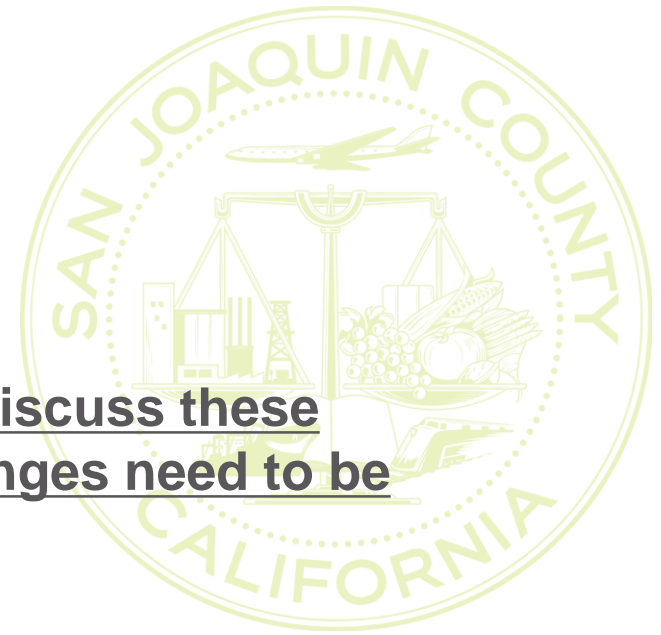
	1	2	3	4	5
Population	161,381	160,184	151,997	146,525	157,226
Deviation	5,918	4,721	-3,466	-8,938	1,763
Deviation %	3.8%	3.0%	-2.2%	-5.7%	1.1%
Other	27,207	45,352	56,703	68,368	63,481
Other %	16.9%	28.3%	37.3%	46.7%	40.4%
Latino	100,146	60,370	56,228	53,857	51,213
Latino %	62.7%	37.7%	38.7%	36.6%	32.6%
Asian	10,175	17,755	27,255	30,144	34,534
Asian %	10.6%	21.7%	17.9%	14.4%	22.0%
Black	15,997	19,127	3,110	3,416	7,998
Black %	9.9%	12.3%	6.1%	2.4%	5.1%

The total deviation of the plan is the sum of the absolute values of the highest and lowest districts. *Here the plan deviation is 9.5%*

Citizen Voting Age Population (CVAP)

	1	2	3	4	5
Total CVAP	76,967	100,354	89,016	91,641	91,020
Other CVAP	20,356	38,585	46,137	56,259	48,932
Other CVAP %	26.4%	38.4%	51.8%	61.4%	53.8%
Latino CVAP	37,629	28,078	26,622	21,442	24,915
Latino CVAP %	48.9%	28.0%	29.9%	23.4%	27.4%
Asian CVAP	8,307	21,194	10,476	11,282	12,244
Asian CVAP %	10.8%	21.1%	11.8%	12.3%	13.5%
Black CVAP	10,675	12,497	5,782	2,658	4,929
Black CVAP %	13.9%	12.5%	6.5%	2.9%	5.4%

Next Steps:



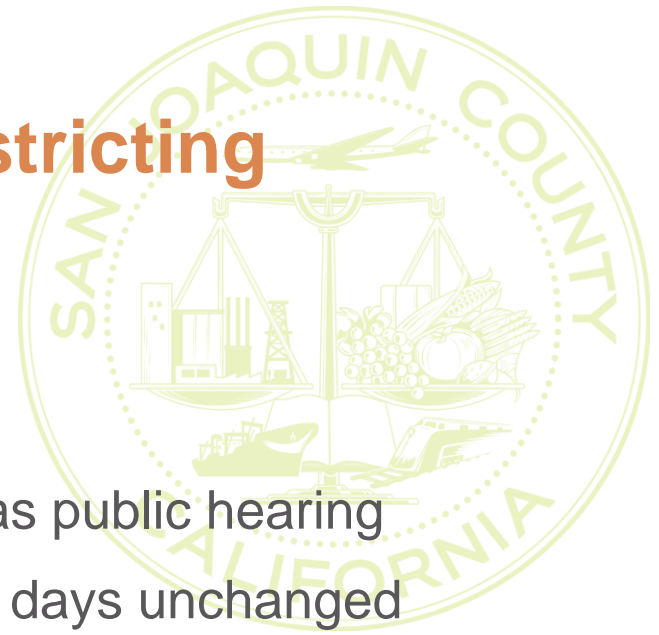
Today is an opportunity for the Board to discuss these recommended plans and advise what changes need to be made prior to voting on a final plan.

- **What communities or areas need to be shifted between districts to ensure we keep communities whole?**
- **Both plans are at the upper limits of total deviation, so changes will require balancing population shifts between districts**
- **Your input and observations are vital for this process**

Upcoming Supervisorial Redistricting Hearings:

BOS Hearings

- **12/7 BOS Hearing 1:30PM** – on Agenda as public hearing
The BOS to vote on final map(s) that is 7 days unchanged
- **12/15 Last day for the BOS to approve map(s)** for the June 7, 2022, Primary Election



QUESTIONS?

